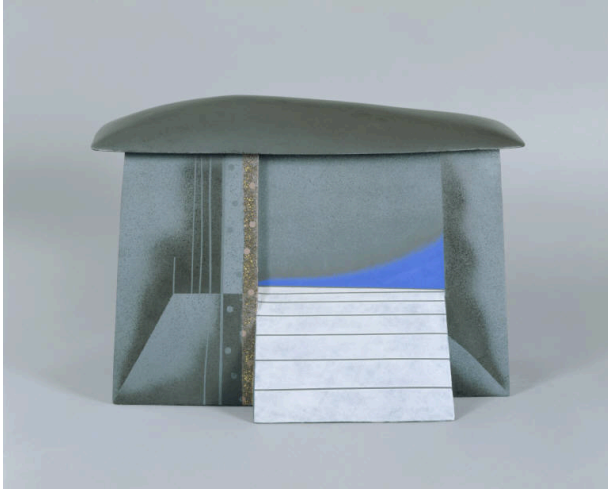


# Basic Detail Report

---



## Memories of a House #2

### Date

2002

### Primary Maker

Yasuo Hayashi

### Materials

Earthenware

### Description

This house-like structure made from earthenware has an asymmetrically sloped roof and walls that tilt slightly inward as they reach the roof. The piece is somewhat abstract and gives a suggestion of a stairway and a large window in the front and another door in the back. The walls and roof are smooth gray with sharp edges and painted shadows, which suggest depth.

### Dimensions

15 1/2 x 22 x 10 1/4 in. (39.4 x 55.9 x 26 cm)