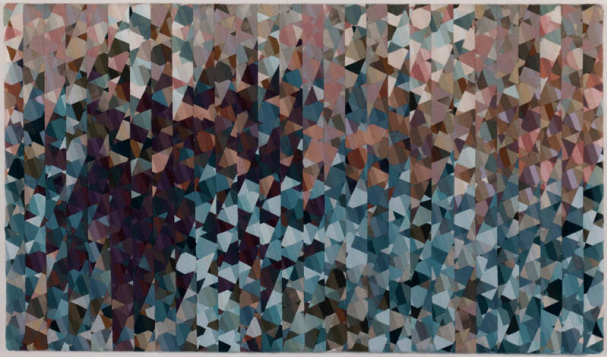


Basic Detail Report



November Eve

Date

1993

Primary Maker

Joy Saville

Materials

Cotton, linen, silk, voile, muslin; pieced, stitched,

constructed

Description

This mosaic-like quilt is composed of hundreds of tiny geometric fabric swatches in reds, oranges, pinks, and blues. The combination of pastel and bold colors creates a kaleidoscope or impressionistic effect.

Dimensions

39 1/2 x 68 x 1/4 in. (100.3 x 172.7 x 0.6 cm) Framed: 39 1/2 x 68 x 1 1/2in. (100.3 x 172.7 x 3.8 cm)